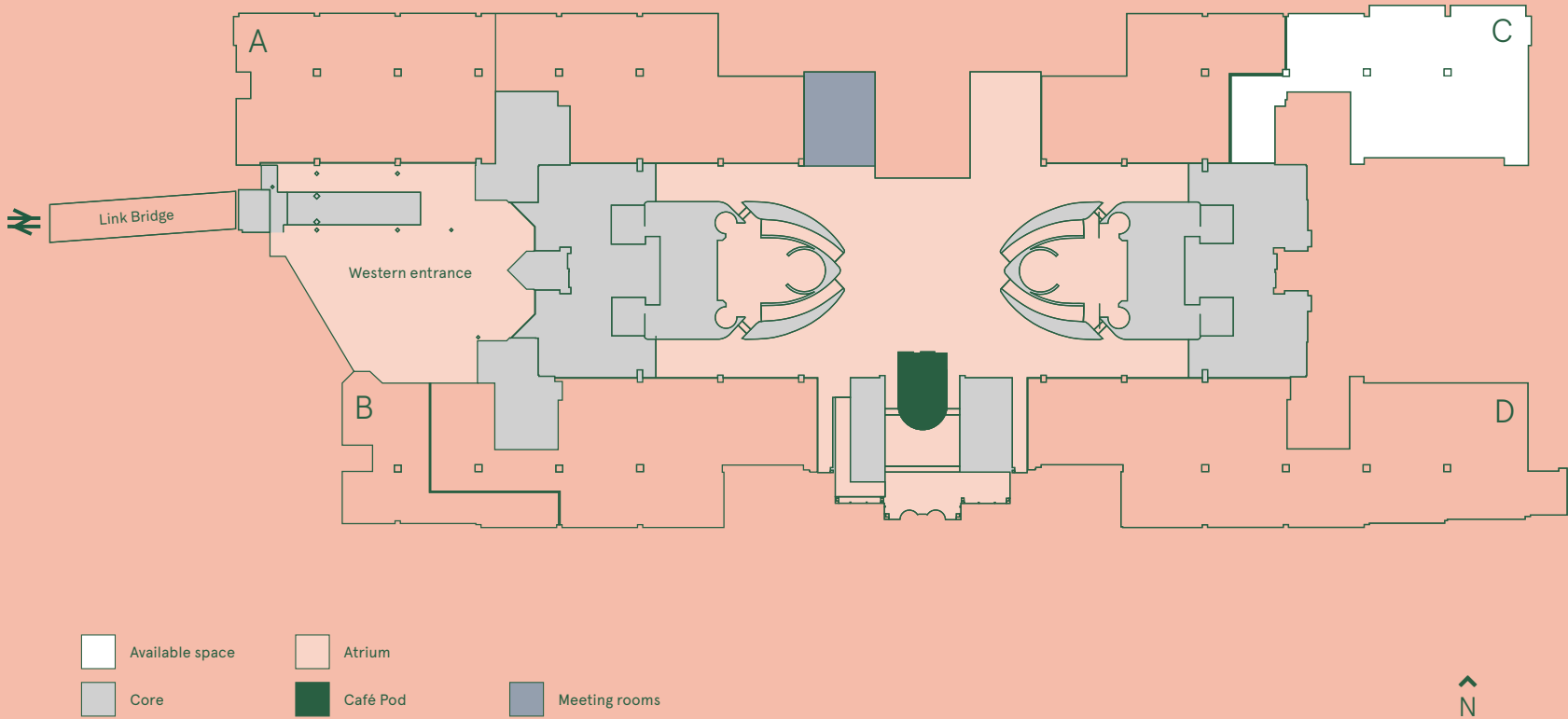




# Ground floor east

## C

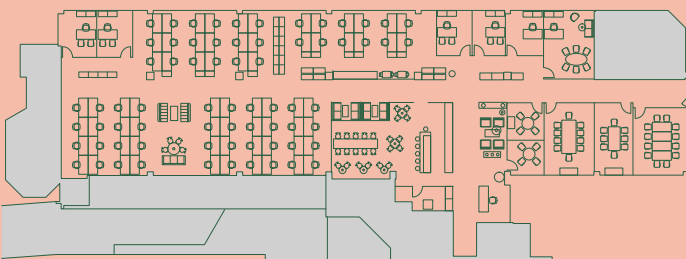
3,374 sq ft / 313 sq m\*



# Example space plan

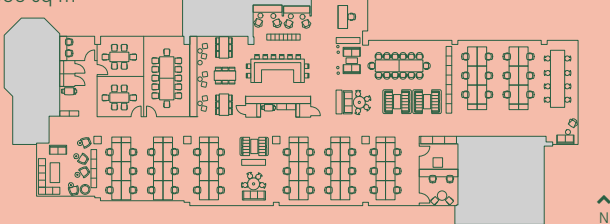
## Corporate layout

7,720 sq ft / 717 sq m\*



## Media layout

6,331 sq ft / 588 sq m\*



Floor plans not to scale. For indicative purposes only.

\*Approximate internal floor areas.

### Misrepresentation Act

These particulars do not constitute a contract. Prospective occupiers must not rely upon the details herein as statements of facts or representations and must satisfy themselves as to their accuracy. BS3141. October 2017.

## Corporate accommodation

Reception	1
Client waiting area	1
Open plan	70
Offices	6
Meeting room (12 person)	1
Meeting room (10 person)	1
Meeting room (8 person)	1
Meeting room (4 person)	2
Breakout area	1
Comms room	1
Print point	1
<b>Total head count</b>	<b>77</b>

## Media accommodation

Reception	1
Client waiting area	1
Open plan - fixed desks	48
Open plan - hot desks	24
Meeting room (12 person)	1
Meeting room (6 person)	2
Quiet room	2
Phone booth	4
Breakout area	1
Comms room	1
Print point	2
<b>Total head count</b>	<b>73</b>

We have inspiring spaces  
for inspiring businesses.  
At Apex, we believe working life  
should be about meaningful  
connections. It's better for work,  
it's better for you.

**CAMPBELL  
GORDON**

Keith Wise  
0118 959 7555  
keith@campbellgordon.co.uk

Alice Hilliard  
0118 959 7555  
alice@campbellgordon.co.uk

 **Knight  
Frank**

Roddy Abram  
020 7861 1280  
roddy.abram@knightfrank.com

Alasdair Collins  
020 3826 0608  
alasdair.collins@knightfrank.com

**apexreading.co.uk**

  
**Legal &  
General**