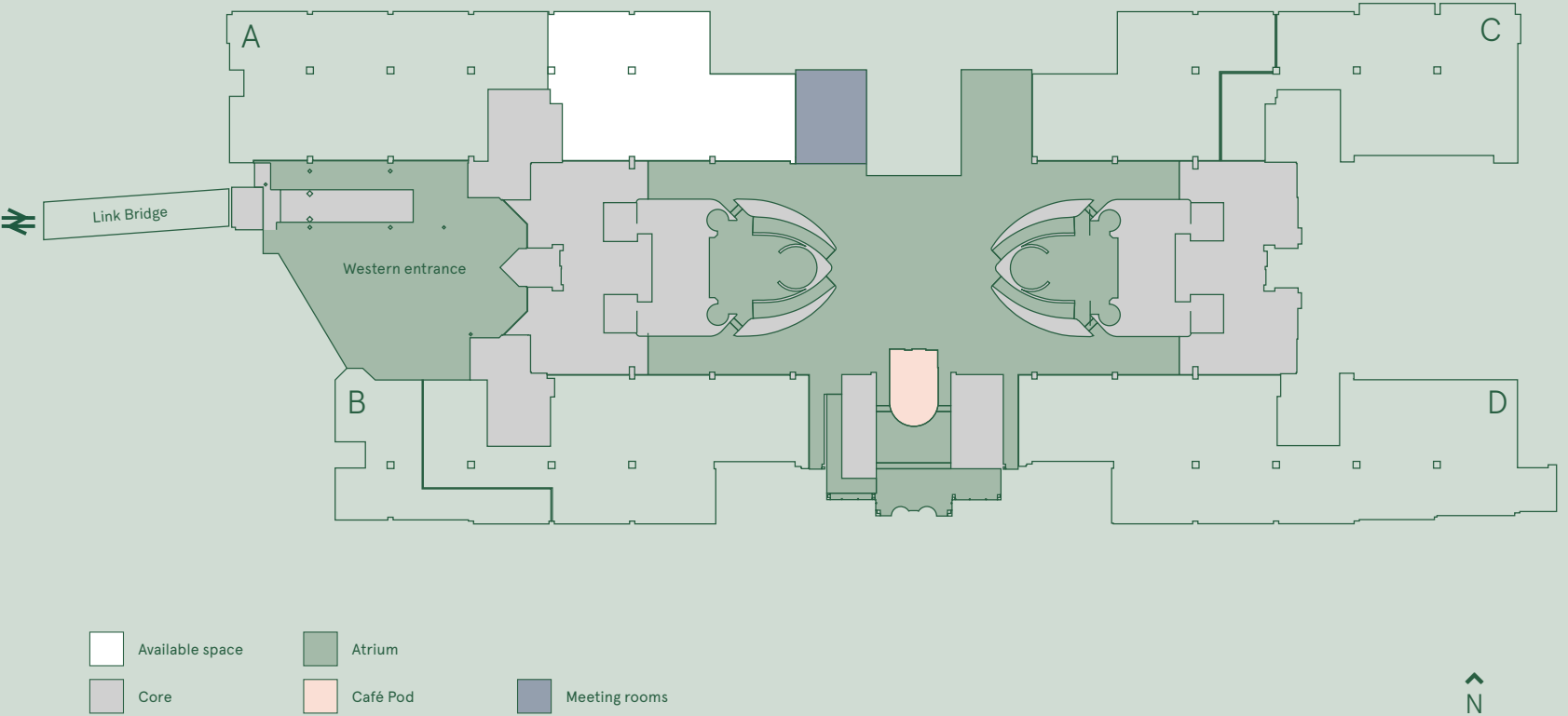




Ground floor east

A

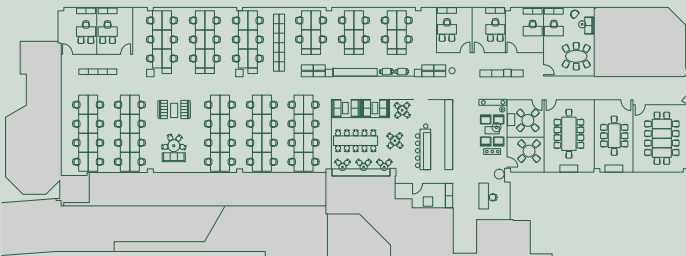
2,788 sq ft / 259 sq m*



Example space plan

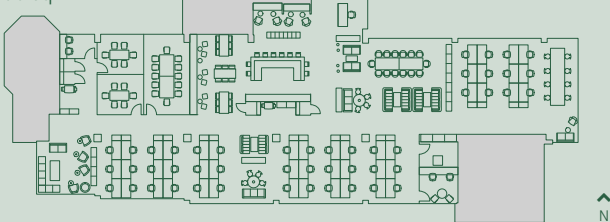
Corporate layout

7,720 sq ft / 717 sq m*



Media layout

6,331 sq ft / 588 sq m*



Floor plans not to scale. For indicative purposes only.

*Approximate internal floor areas.

Misrepresentation Act

These particulars do not constitute a contract. Prospective occupiers must not rely upon the details herein as statements of facts or representations and must satisfy themselves as to their accuracy. BS3141. October 2017.

Corporate accommodation

Reception	1
Client waiting area	1
Open plan	70
Offices	6
Meeting room (12 person)	1
Meeting room (10 person)	1
Meeting room (8 person)	1
Meeting room (4 person)	2
Breakout area	1
Comms room	1
Print point	1
Total head count	77

Media accommodation

Reception	1
Client waiting area	1
Open plan - fixed desks	48
Open plan - hot desks	24
Meeting room (12 person)	1
Meeting room (6 person)	2
Quiet room	2
Phone booth	4
Breakout area	1
Comms room	1
Print point	2
Total head count	73

**We have inspiring spaces
for inspiring businesses.
At Apex, we believe working life
should be about meaningful
connections. It's better for work,
it's better for you.**

**CAMPBELL
GORDON**

Keith Wise
0118 959 7555
keith@campbellgordon.co.uk

Alice Hilliard
0118 959 7555
alice@campbellgordon.co.uk

 **Knight
Frank**

Roddy Abram
020 7861 1280
roddy.abram@knightfrank.com

Alasdair Collins
020 3826 0608
alasdair.collins@knightfrank.com

apexreading.co.uk


**Legal &
General**